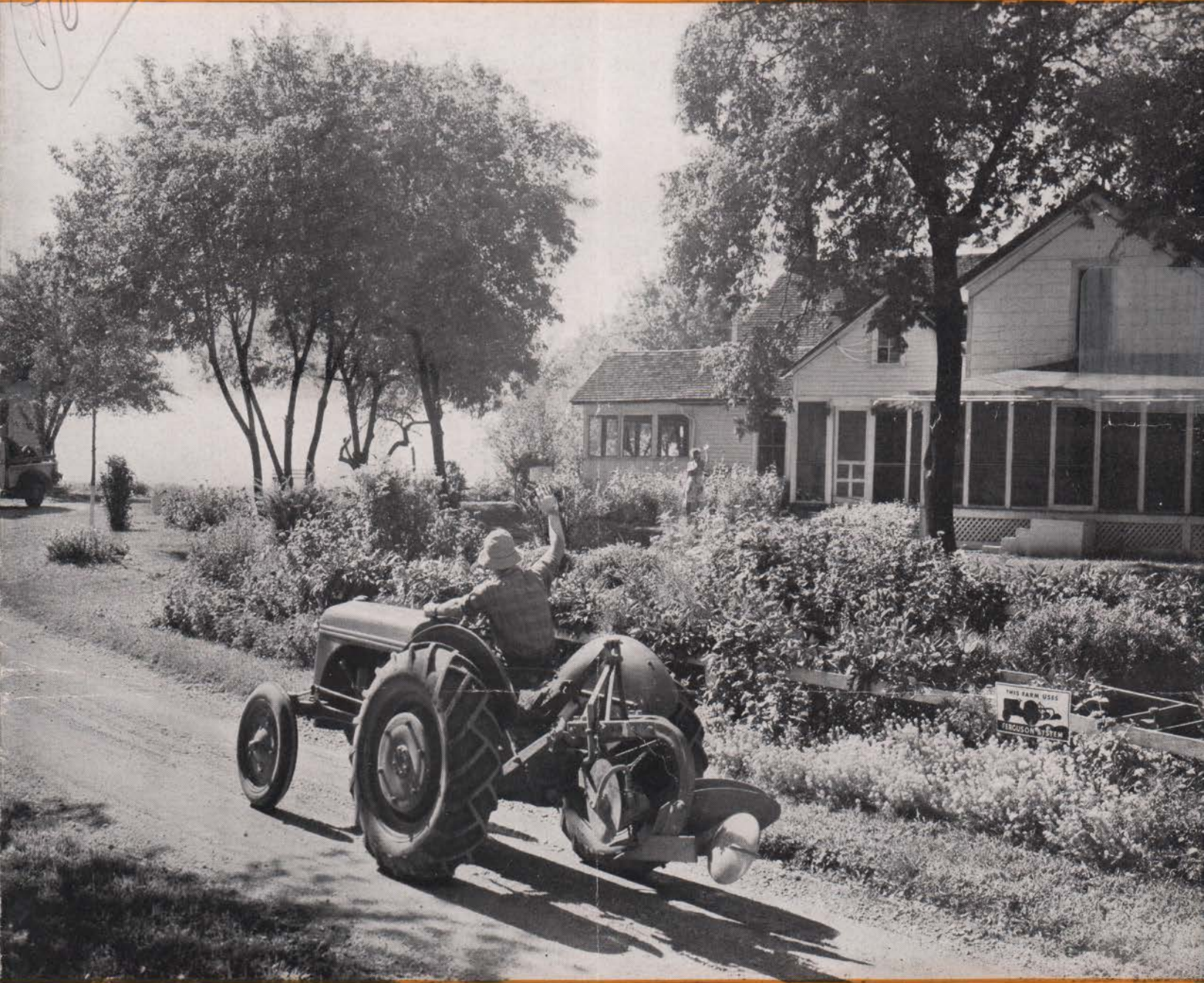


FERGUSON SYSTEM IMPLEMENTS

Portland
for Finger Tip Farming



SALES &

SERVICE

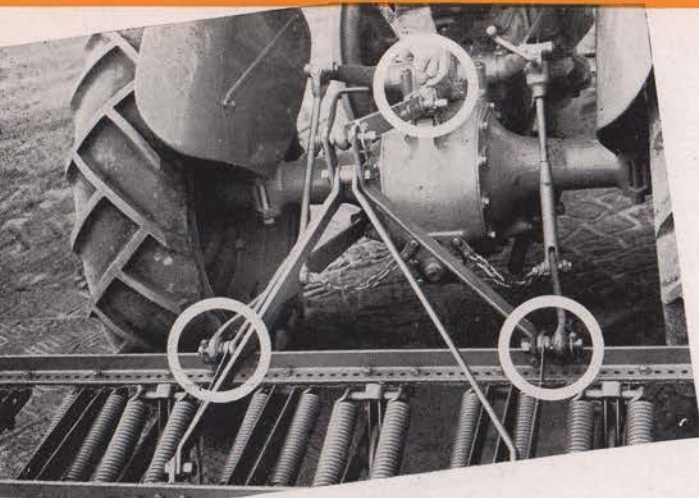
Copyright 1946 by Harry Ferguson, Inc., Detroit, Mich. Copyright under International Copyright Union. All Rights Reserved under Inter-American Copyright Union (1910).

THE FERGUSON SYSTEM OF MECHANIZED FARMING

www.ntractorclub.com

Field Work Made Easier Than Ever Before

The Ferguson System Makes The Difference



Tens of thousands of farm operators now *know* that the Ferguson System has given farm operators the means to produce their crops at lower cost, with less work than ever before in the history of food production.

One-Minute, 3-Point Attachment

Nearly all Ferguson Implements become a unit with the tractor through its simple, 3-point linkage. In less than a minute, the implement can be attached to the tractor merely by inserting three link pins. In busy seasons, when necessary to change frequently from one implement to another, this one-minute, 3-point attachment can save you many valuable hours.

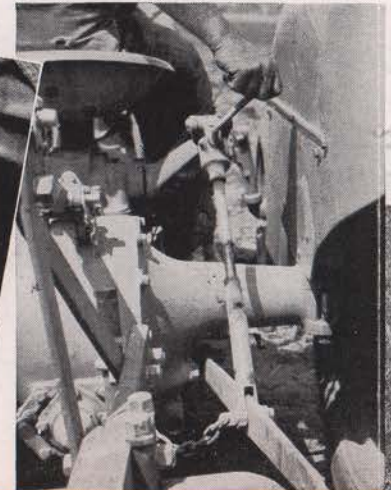
Effortless Finger Tip Control

A touch on the control, and smooth-acting hydraulic power replaces *your* muscles in raising and lowering the implement. In nearly all Ferguson Implements this same control instantly and effortlessly adjusts the working depth. With the convenient leveling crank, you tilt or level the implement while in motion. Again, no strain, no effort, no need to leave the tractor seat.

Ferguson System hydraulic control is not a separate attachment. *It is a permanent, built-in part of the tractor.* It costs you nothing extra.



Above, finger tip hydraulic control; right, finger tip leveling crank.



SOME OTHER VALUABLE ADVANTAGES OF FERGUSON ENGINEERING

Self-Transporting



Nearly all Ferguson Implements are attached to and carried as a part of the tractor to make them self-transporting. This is a real advantage in these days when fields often are a considerable distance from the farmstead. You can travel on roads or lanes without slowing down to protect the implement.

Works ALL Your Land



Close-coupled Ferguson Implements work all your land. It is easy to get in fence corners and work in small plots—simply raise the implement and back into the tightest corner. The unit-attached implement cannot “jack-knife” when backing. Adjustable tractor tread lets you work right up to fences.

Automatic Implement Protection



The moment a solid, hidden obstruction is hit, automatic action of the hydraulic control instantly takes the strain of the impact off the implement and tractor. You merely back the tractor far enough to lift the implement by finger tip control, drive past the obstruction, lower the implement and go on.

The FERGUSON SYSTEM gives you Complete

www.ntractorclub.com

Complete Equipment for Finger Tip Farming

Starts with these Four Ferguson Implements

When equipping your farm for Finger Tip Farming with the Ferguson System it is quite likely, in most sections of the country, that you will first choose the implements shown on this page. These implements will do the basic soil tillage, seedbed preparation and crop cultivation on the majority of farms.

For special soil and crop conditions, and replacement of older style implements as they wear out, you can select, as the need arises, from the many other Ferguson Implements illustrated on the following pages. Ferguson Implements pay large dividends by helping you do your work so easily, at reduced cost.



← **TWO-BOTTOM PLOW**—Ferguson Plows need no heavy frames or axles; no levers, springs or lifting devices of any kind. Weigh as much as 400 pounds less than pulled-type plows of similar capacity. Built of special-grade, high-strength alloy steel. Available with 10, 12 or 14-inch bases, with wide variety of moldboards and shares for all types of soil. Single-bottom, 16-inch plow also available for special conditions.



TANDEM DISC HARROW—Angle of disc gangs instantly and effortlessly set by finger tip hydraulic control, without stopping or backing tractor. Available in 5' and 6' widths with 18" discs and 6' or 7' widths with 16" discs. Special dust-shielded bearings. →



← **ROW-CROP CULTIVATOR (Rigid Tine)**—Adjustable for cultivating two, three or four rows from 42" to 16" widths. Extra strong, heat-treated, alloy steel stems, with sweeps or shovels having three-way adjustment for pitch, depth and angle. Standard blade or rolling steering fin causes cultivator to automatically follow the rows as you steer by the row marker on the front axle.



TILLER—An exclusive Ferguson development → for economical seedbed preparation without plowing, field and orchard cultivation, deep tillage, weed control and many other uses on every farm. Spring action enables tines to pass over subsurface obstructions and automatically reset without stopping the tractor. Available with 7 or 9 tines for 7' frame.

te Implement Control with finger tip ease!

www.ntractorclub.com

FERGUSON SYSTEM IMPLEMENTS

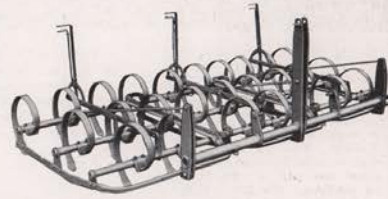
for Finger Tip Farming

help you get the most from your
LAND, CROPS and TIME

ROW-CROP CULTIVATOR (Spring Tine)—Alloy spring steel tines, heat-treated to give proper spring action and maximum strength. Tines mounted on bell-crank stems, easily raised or lowered, or rotated to adjust sweeps or shovels to or away from row. Cultivates two, three or four rows spaced from 42" to 16". By easy adjustment of tines, may be quickly converted into 7' field cultivator. Blade or rolling steering fin.



SPRING TOOTH HARROW—Attached by the Ferguson 3-point linkage and carried on the tractor. Finger tip hydraulic control raises and lowers the harrow, for transport and turning at ends of field, or lifts it for clearing trash, without stopping the tractor. Heat-treated, high-strength spring teeth with hardened points. Replaceable, reversible points available as extra equipment. Two or three sections, 6'2" and 9'1" widths.



LISTER PLANTER—Supplied as an attachment for the Ferguson Middlebuster frame, as corn or corn and cotton planter. Equipped either with rotary moldboards (illustrated) or subsoiler openers. Press wheels or drag covers optional. Adjustable for 38", 40" or 42" rows, with plates and sprockets to drop seed 6 1/2" to 25" apart in row. Planter is automatically thrown out of gear when raised from ground by finger tip hydraulic control.



FOUR-ROW WEEDER—A valuable tool for cultivating large acreages in a short time, and aiding crop growth by breaking up soil crust. When used to kill small weeds before they get a good start, this weeder can often

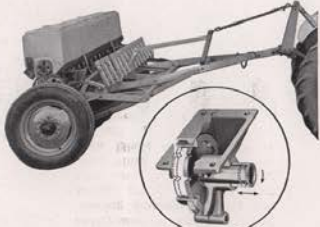
save one or two cultivations with a row-crop cultivator. Width is 13'11" to cultivate four 42" rows. End sections fold up, giving weeder transport width of 10' for going through gates and narrow lanes.



SINGLE DISC HARROW—Finger tip control angles or straightens the disc gangs while the tractor is in motion. Saves time and protects sod when crossing grassed waterways. Straightening gangs when turning at end of

field prevents ridging the soil, permits short turns and relieves tractor of extra strain. Available in 10' width with 20 16" discs and in 12' width with 24 16" discs. Hard maple bearings, with special dust shields, pressure lubricated.

GRAIN DRILL—A 13 x 7" single disc opener drill, attached to tractor by Ferguson 3-point linkage, allowing drill to be raised and lowered, and thrown out of gear, by finger tip hydraulic control from the tractor seat. This drill also introduces the exclusive variable internal run (circle) seed metering feed. Adjustable for wide range of seed and grain, from sweet clover or alfalfa, to soybeans. Grass seed and fertilizer attachments available.



TOWNOR OFFSET DISC HARROW—Attached by Ferguson 3-point linkage, raised and lowered and cutting depth regulated without stopping tractor, by finger tip hydraulic control. Gangs may be offset 18" to either right or left, without side draft, or may be used without offset. Available with either plain 22" discs. Popular for orchard and vineyard work, dicing tough soils, and dicing down heavy cover crops or stubble.

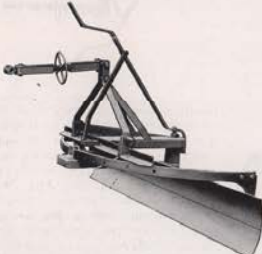


ROW-CROP CULTIVATOR (Listed Crops)—Construction of this cultivator is outstanding in simplicity and ease of adjustment for leveling the ridges during first cultivation, then ridging the row as desired during later cultivations. Closed steel fenders protect small plants from being covered. Three heavy-duty spring steel shanks with 16" sweeps wipe out wheel tracks, level the ridges, kill weeds and leave soil in condition for absorbing rainfall. Discs are 16".



SOIL SCOOP—This new, improved design is of the rear dump type, allowing the operator to backfill over a ditch or embankment. Finger tip control provides automatic dumping action. Special telescoping top-link provides for quick, easy adjustment for depth of "bite" in different soil conditions. Attaches to Ferguson 3-point linkage in a minute or less. Special wear- and drag scoop on short hauls.

GRADER AND TERRACER—An excellent blade-type grader and terracer, permitting individual farm operators to construct their own terraces at low cost. Also widely used for constructing and cleaning drainage or irrigation ditches, grading roads, cleaning barn and feed lots, clearing snow, filling ditches and similar work. Blade angles to right or left and tilts 22 1/2 degrees with one leveling screw on tractor linkage, or 45 degrees with two leveling screws. Blade is 72" long and 12 1/2" high, with 4" removable cutting edge.



DISC PLOW—Preferred by many for work in abrasive, waxy or extremely hard soils and similar conditions which make moldboard plow use difficult. Plow raised and lowered by finger tip hydraulic control. Level and depth adjusted by finger tip levers. Available in one, two or three-disc sizes, with 26" discs, disc turns 12", two disc, 18" and three disc, 27". Maximum depth, approximately 12".

LINDEMAN TWO-WAY PLOW—Long used in irrigated areas, the two-way plow is being used more and more for hill-furrow at edge of field or contour strip. This ruggedly designed plow is completely controlled in the soil and for raising or cutting rotates, ready for the return trip through the field. Furnished with 16" bases, with variety of moldboards.

FARM MOWER—Simplicity of design allows easy attachment to the 3-point Ferguson System linkage in five minutes or less. Cutter bar raised or lowered for turning or backing, by finger tip hydraulic control. Automatic safety release allows cutter bar to swing back if an obstruction is hit; automatically V-belt drive. Housing is cushioned on rubber mountings, to keep vibration from tractor and operator.



DISC TERRACER—For low-cost terrace construction and ditching on your own farm, or for profitable custom work in your spare time. Heavy 28" disc mounted on right side of tractor. Raised, lowered and depth set by finger tip control. Disc angle adjustment for various soils and speeds is within easy reach of operator. Disc runs on two heavy roller bearings, contributing to light draft and long life. Maximum operating depth, 14".



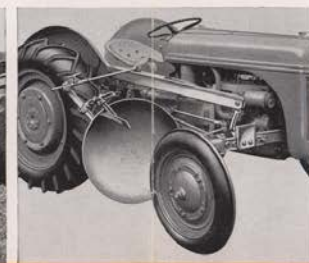
WOOD BROS. CORN PICKER—Universally praised by users for clean picking, clean husking and minimum shelling due to special design rotary snapping bar and rubber husking rolls. Wagon hitched directly back of picker, eliminating sideway and side draft. Adjustable elevator hood, controlled from tractor seat, enables wagon to be filled evenly without stopping to level off corn by hand. Floating gathering points for picking up down stalks.



W-W GRINDER—A hammer-type grinder for grain and dry or green roughage. Designed for large capacity with low power consumption. Cylinder extends full width of feeder opening. Sixteen beveled hammers or combination of hammers and knives, of wear-resisting, high-strength alloy, are faced with Stellite to provide a self-sharpening action. Screens available with perforations from 3/8" up.

HEAVY-DUTY MOWER—Praised by owners for its great range of adaptability to every mowing requirement, both on the farm and for highways, railroad right-of-ways and other difficult mowing jobs. Finger tip control of the Ferguson System permits mowing with the cutter bar in any position from vertical, to 45 degrees below horizontal. Ruggedly built. Double V-Belt drive. Available with 5', 6' or 7' cutter bar, in regular or brush types. Automatic "break-back" protects cutter bar if obstruction is hit.

SWEEP RAKE—One man or boy with tractor and Ferguson Sweep Rake often can bring as much hay to barn or stack as three or four men with loader and wagons. Load is raised to transport position by finger tip hydraulic control. I-beam frame and steel-trussed head provide strength and rigidity. Load capacity, approximately 600 pounds. Load is pushed off automatically when tractor is backed.



The FERGUSON SYSTEM gives you Complete Implement Control with finger tip ease!

www.ntractorclub.com



POWER JACK—Attached to Ferguson System linkage in a minute or less, this jack raises the entire tractor effortlessly, by hydraulic power. With just a touch on the finger tip control, tractor may be raised for easy shifting of wheels to change tread widths, tires, etc. This jack is Ferguson engineered to save you time and work when changing wheel tread widths. With hydraulic control, tractor is raised until weight is just off the wheels. You do not have to lift the wheel — just roll it into position and slip it in place on the hub bolts.



CORDWOOD SAW—Attached to the tractor by the Ferguson 3-point linkage. To move the saw from one job to another, merely lift it to transport position by finger tip hydraulic control and drive off. Belt automatically loosens when saw is raised to transport position. Swing table is spring loaded. 30" saw blade runs on roller bearings.

HANDY TIME SAVERS for the MECHANIZED FARM



TRANSPORT BOX—Makes your tractor a convenient "carry-all" for transporting cans of milk, feed, firewood, tractor fuel to the field, and many other items that need moving from one place to another, day in and day out. Attaches to Ferguson 3-point linkage. Capacity, 500 pounds. Removable endgate. Raises by finger tip control to approximately 14 inches from the ground for transport. Rugged steel construction.



4-WHEEL WAGON—Two-ton capacity, especially constructed for use with tractor for on-the-farm or farm-to-market hauling at up to 12 miles per hour on farm roads and lanes, and higher speeds on surfaced highways. Wheel base and reach adjustable to 7'6", 9'3" or 11'0". Bolster stakes adjustable for 38" or 42" beds. Tapered roller bearings in all wheel hubs. 6.00" x 16" tires on demountable steel disc wheels.



2-WHEEL WAGON—Three-quarter-ton capacity, light draft, for use with tractor, truck or automobile. Exceptionally sturdy steel axle, with two tapered roller bearings in each wheel hub. Steel reinforced wood box, 44" x 90" x 14" with removable endgates. Equipped with 6.00" x 16" rubber tires and tubes.



HARRY FERGUSON • INC • DETROIT • MICH •

www.ntractorclub.com

Printed in U.S.A.